

The powerful, next generation groupware solution for your company



keep in touch

OPEN·XCHANGE®

Looking for mature collaboration software that won't turn your whole IT infrastructure upside down? Interested in a scalable and cost-effective solution that from day one offers long-term protection of your investment?

Real-time functionality at every seat; immediate employee acceptance, and you still get to keep your MS Outlook clients? OPEN-XCHANGE® Server 5.0 delivers all that. And it does it with both impressive functionality and flexibility. And for a surprisingly small investment, no matter whether you have five or 5,000 employees.

OPEN-XCHANGE® Server 5.0 is the cost-effective server solution for anyone who wants to stay on the leading edge.

Productive. More and more companies are deciding on collaboration groupware that supports teamwork through open standards. Open interfaces ensure significant cost advantages with maximum implementation flexibility – for next year and beyond.

Flexible and convenient. OPEN-XCHANGE® Server 5.0 is a cost-effective server solution based on Open Source components. A professional team player for global information exchange – no matter how big (or small) your company is. Suddenly it doesn't matter any more where an employee might be – an Internet login is all it takes to get access to all necessary information in seconds, from anywhere in the world.

Powerful. OPEN-XCHANGE® Server 5.0 offers the functionality of a mature collaboration system. It's more than a full-function replacement for MS Exchange. With email, calendar, contacts, to-do list, project, and document modules – to name a few features – you cannot only manage deadlines and projects, but also bookmarks, and even connect or link objects together as needed. Documents can be shared, edited and the changes tracked from

any location with an Internet connection. There are additional features: Oxtenders, that support the integration of MS Outlook and the Palm desktop, and Open Source anti-virus and anti-spam modules for additional network security.

Next generation technology. OPEN-XCHANGE® Server 5.0 is so powerful, and the next generation groupware solution, because it grows with each new task and already provides an open infrastructure to add additional ISV and Open Source components, called Oxtenders. The commercial version can be purchased from the OPEN-XCHANGE® Online-Shop or from an OPEN-XCHANGE® distribution partner. Each purchased version includes the experience of OPEN-XCHANGE® users and the ambition of the Open Source community to keep making OPEN-XCHANGE® Server 5.0 better.

Make your own decisions: which modules make sense for which employees and when

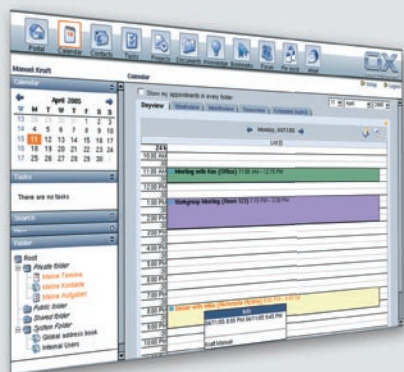
Needs-oriented functionality. OPEN-XCHANGE® Server 5.0 embodies the principle of form follows function. You select the modules you need: tasks, bookmarks, calendars, contacts, and much more – for the whole company, for a single department or for a single individual. And you can always change the functionality and access rights that you have defined for a user or group. We offer a highly configurable system with flexible access rights or permissions that can be tailored to fit the needs of each role in your company.

This way every employee has access to exactly those functions matching his/her needs at any time – no more, no less.

All information in one folder. Only OPEN-XCHANGE® Server 5.0 applies the concept of shared folders for maximum usability. The principle is simple: using just one folder the user can store all of the information needed for a particular project or process, including all contacts, meetings, and background information.

No more problems finding information. OPEN-XCHANGE® Server 5.0 defines a whole new standard of quality in information retrieval. It supports fast, full-text searches of many file types and documents and makes transparent how information is interrelated. OPEN-XCHANGE® Server 5.0 offers two information management functions: simple connection of information user defined by links; and user-friendly Boolean search functions.

The OPEN-XCHANGE® modules at a glance:



Portal

A central Home Page that offers an overview of all the data types in the system including email, calendar and contacts as well as direct access to all personally relevant information, like tasks, meetings, and projects. It highlights the most recent emails, appointment requests and tasks on a single page.

Calendar

This OPEN-XCHANGE® module eases the efficient coordination of individual and group schedules,

with free/busy functions for the display of availability of participants and resources such as conference rooms.

Contacts

A module for complete contact management that can be extended through customizable, optional categories. Global company address book, project-related internal and external contacts, fully confidential personal contacts, ranking of important business contacts. Connections between contacts, and much more.

Tasks

An OPEN-XCHANGE® module for the management and efficient administration of individual tasks. There are “custom list views” for sorting and prioritizing. There is an “attach” function to assign documents to a task.

Projects

This OPEN-XCHANGE® module is designed for the efficient organization of project-specific teamwork and access

to project-relevant information like meetings, tasks, and documents.

Document management

A module for efficient, access-permission-based work with documents that offers automatic versioning, locking of documents during editing, saving from MS Office applications, and access from MS Explorer.

Web mail

The OPEN-XCHANGE® module for global, secure, virus-free access to accounts. With all global address books and personal signatures in a familiar mail format. IMAP4 support for employees on the road.

Knowledge, Bookmarks, Forum, and Bulletin board

More modules for the know-how transfer between your employees. Construction and maintenance of a central knowledge database, bookmark management and discussion in forums.

High transparency for maximum workflow

OPEN-XCHANGE® Server 5.0 is a universal work tool. Its front end has a correspondingly universal design: a clearly organized, clean user interface, with no distractions. The menu bar is designed with self-explanatory icons through which the user can get to email, calendar, contacts, tasks, projects, and so on. Anybody can learn to use it – without lengthy training. Users of MS Outlook, too, can start immediately with OPEN-XCHANGE® Server 5.0. OPEN-XCHANGE® Server 5.0 is the perfect solution for fast communication and information exchange between team members.

OPEN-XCHANGE® Server 5.0 configurations:

Fat-client based

Collaboration and mail:

MS Outlook 2000, XP, or 2003

Mail only / IMAP and POP3 clients:

MS Outlook Express, Mozilla Mail, Kmail, Netscape Messenger, Pegasus, Eudora, and many more

Web browser based

Groupware and mail:

Firefox, MS Internet Explorer 5.x, MS Internet Explorer 6.x, Netscape 6.x, Mozilla 1.x, Konqueror 3.x, Opera 6.x

PDA connectivity

Pocket PCs and Win CE devices:

Synchronization through MS Outlook

Palm synchronization:

Through Palm Desktop or Kpilot

“The perfect architecture for a Web-based, mobile groupware solution with over 8,000 users.”

René Patthey, CIO of large hospital Hospices CHUV, Lausanne

The new openness: Open Source functionality that works with Outlook clients

Many IT decision-makers insist that users continue to be able to use MS Outlook and MS Explorer. You, too? With OPEN-XCHANGE® Server 5.0, MS Outlook and MS Explorer stay on board even if MS Exchange is replaced. As an Open Standards based solution, OPEN-XCHANGE® Server 5.0 integrates with virtually every desktop environment or standard client, and with MS Outlook and MS Explorer. For the technically minded, this means clients can connect through WebDAV/XML interfaces. For everyone, the advantage: real-time functionality for the entire workgroup, regardless of what is on their desktop, laptop or mobile device. The offline functionality of MS Outlook is supported as well. Changes to the user interface are minimal. The advantage: maximum efficiency without lengthy training. That's the best recipe for company-wide real-time productivity.

OXtender

In the past the answer was to choose proprietary solutions offered by well known manufacturers.

Today OPEN-XCHANGE® offers a new, modern solution to the age old problem with it's innovative, trend setting OXtender. Developed to published internet standards using Open Source APIs and interface extensions, the OXtender integrates simply and efficiently into an existing IT infrastructure. If desired, the OXtender can even be extended by ISVs (Independant Software Vendors) - to provide fax, VoIP, or CRM solutions, for example. Extension, for SAMBA, Wiki or more exotic uses, is also possible through the creativity of the Open Source community where OXtender originated. Many things are plausible, nearly everything is possible with existing technology and without the need to go forward making guesses about the reliability of proprietary technologies and manufactures.

10 Keys to Protect your Groupware Investment

- ▶ Intuitive Organizer
- ▶ Easy Configuration
- ▶ Efficient Server Administration
- ▶ Open Source with low TCO / Open Architecture
- ▶ Easy Migration and Integration
- ▶ Standards based Powerful Collaboration
- ▶ Effective Use of Linux Server Investment
- ▶ MS Outlook Integration
- ▶ Cost-Saving Licensing Model
- ▶ Next Generation Groupware & Collaboration Technology

Know-how is Number 1

OPEN-XCHANGE Inc. is the global market leader in Open Source collaboration software. Founded in 1996 by two engineers in Olpe/Biggesee, Germany, its predecessor named Netline concentrated on the development of web site solutions. By 1999, it had formed an alliance with Compaq Computer and released ComFire, its first collaboration server. In 2002, Netline's technology was selected by SUSE Linux AG as the core of the award winning SUSE Linux Openexchange Server (SLOX). In August 2004, OPEN-XCHANGE® was released as an Open Source project at LinuxWorld San Francisco. OPEN-XCHANGE Inc. was founded at the beginning of 2005 with headquarters in New York to fund the development of a cross platform, operating system agnostic server and to address the needs of the global market.

World class references

Today, OPEN-XCHANGE® Server 5.0 or its predecessor, SLOX, is used by more than 1,200 companies and organizations worldwide. From a small shop with 5 or 10 users to an enterprise with more than 8,000, it is useful in any industry or functional group. A selection of users: Hospices CHUV, ARS Altmann AG, Bloor Research Ltd., Linpro AS, RICIS Inc., NorCom IT AG, and many more.



OPEN-XCHANGE Inc.

303 South Broadway
Tarrytown, New York 10591
Office Phone: 914 332 5720
info@OPEN-XCHANGE.com

www.OPEN-XCHANGE.com